



**NATURAL
HISTORY
MUSEUM**

A Matrix based Character Editor for Scratchpads

**Kehan T. Harman
Simon D. Rycroft
Ben Scott
David M. Roberts
Vincent S. Smith**



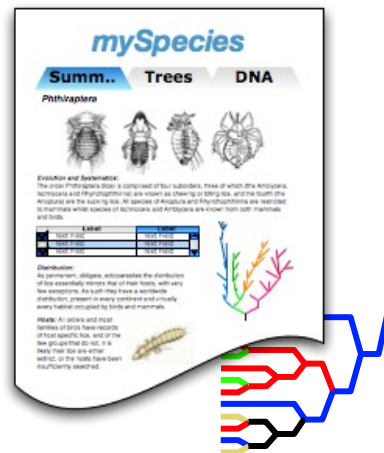
What is a Scratchpad?

A website for you & your community



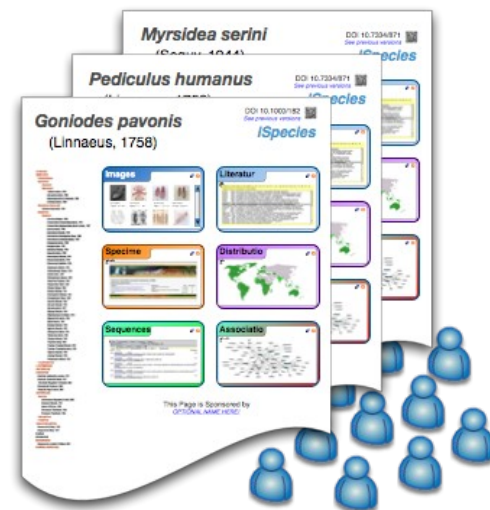
1

Your data



2

Uploaded &
tagged



3

Published & reviewed
on your site

Character Editors

- DELTA



- Nexus Data Editor



- MacClade



- Lucid



- ...

Online?

- MX
- Morphobank



- But we needed something that integrated well with Scratchpads

sandbox.scratchpads.eu

The screenshot shows the Scratchpad Sandbox website. At the top left is a blue header with a Scratchpad logo and the text "Scratchpad Sandbox". Below the header is a navigation bar with "Simple | Taxonomy" and a search box with a "Go!" button. The main content area is divided into several sections:

- Primates**: A list of taxonomic groups with counts in parentheses:
 - Primates (14)
 - Callitrichidae (4)
 - Cebidae (7)
 - Cercopithecidae (18)
 - Cheirogaleidae (4)
 - Daubentoniidae (1)
 - Galagonidae (4)
 - Hominidae (4)
 - Hylobatidae (1)
 - Indridae (3)
 - Lemuridae (4)
 - Loridae (4)
 - Megaladapidae (1)
 - Pitheciidae (4)
 - Tarsiidae (1)
- Content**: A list of content types:
 - Biblio
 - Blog entry
 - Character project
 - Countries map
 - Forum topic
 - Group
 - Image
 - Location (DwC 1.2.1)
 - Newsletter issue
 - Page
 - Phylogenetic tree
 - Poll

In the center, there is a text box with the following text:

The purpose of this site is to allow Scratchpad maintainers and users a chan updated every hour, wiping clean any of the changes that have been made t break this site, that is what it is here for. We have provided a default passw

Username: test
Password: pass

Some tips to get you started:

- Taxonomy**: Add a [biological taxonomy](#) (vocabulary), and then allows you to create taxon pages, and automatically i
- Literature**: Import a [bibliography](#), or [add a new reference](#). To r taxon names are mentioned in the reference. You can
- Users**: [Add](#) or [list](#) site users in different 'roles'. Contributors content, and maintainers can also access advance private areas that can be selectively shared.
- Content**: Use the [list content](#) link to find and manage all con from there.

A callout box titled "Content" lists the following items:

- [Biblio](#)
- [Blog entry](#)
- [Character project](#)
- [Countries map](#)
- [Forum topic](#)
- [Group](#)
- [Image](#)

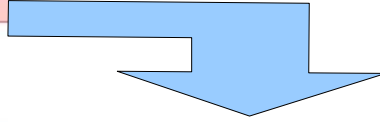
A blue arrow points from the right towards the "Character project" item.

Create Character project

Project title field is required.

Project title: *

Hominids



Vocabularies

Hominids

View Edit Clone

Character project *Hominids* has been created.

Add character

Vocabulary: *
Primates

Choose the taxonomy that contains the t

Array
Terms for Primates

- Primates
 - Callitrichidae
 - Cebidae
 - Cercopithecidae
 - Cheirogaleidae
 - Daubentoniidae
 - Galagonidae
 - Hominidae
 - Gorilla
 - Homo
 - Homo sapiens Lin
 - Pan
 - Pongo
 - Pongo pygmaeus

Primates
Hominidae
Gorilla
Gorilla gorilla (Savage and Wyman, 1847)
Gorilla
Homo
Homo sapiens Linnaeus, 1758
Human
Man
Pan
Pan paniscus Schwartz, 1929
Bonobo

Filter taxa

Data editor Select taxa Export data Project settings

Welcome to project *Hominids*

To add a character, please [click here](#)

To change the taxa terms currently selected, please [click here](#)

Adding a character

Filter taxa

Data editor Select taxa Export data Project settings

Add character

Character title:

Character description:

Character group:

New group name:

Type of character: *

Controlled Text Numeric

Restricted to the states below - useful for building phylogenies & keys.

Coding descriptions

	Body Attributes			Add cha
	1	2	3	
Primates				
Hominidae				
Gorilla				
Gorilla gorilla (Savage and Wyman, 1847)				
Gorilla				
Homo				
Homo sapiens Linnaeus, 1758				
Human				
Man				
Pan				
Pan paniscus Schwartz, 1929				
Bonobo				

Filter taxa

[Data editor](#) [Select taxa](#) [Export data](#) [Project sett](#)

Edit character state

Height

This is a *controlled state character*. Available options are:

- ? Unknown
- Not applicable
- 1 Short
- 2 Tall

For multiple states, please use / for *or* and + for *and*.

Groups

Public
Show this post to everyone, or only to members of the groups checked above.
Posts without any groups are always *public*.

[Access by role](#)

Attribute notes:

TODO

Filter taxa

Data editor

Select taxa

Export data

Project settings

Coming soon

Nexus data file - for phylogeny reconstruction

CSV text file - for generalized export

Printable single access key - for identification

Multi access (matrix) key - for identification

Printable character list - formatted for publication

Printable monograph - formatted for publication

SDD
Delta





**NATURAL
HISTORY
MUSEUM**

Scratchpad management

Scalable & sustainable technology



Hardware, software & user support

Virtual machine, open-source software, self-archiving, backed-up, multi-site configuration
(easy to move & upgrade, secure & reliable, citable, screencasts, low admin., low marginal costs)

